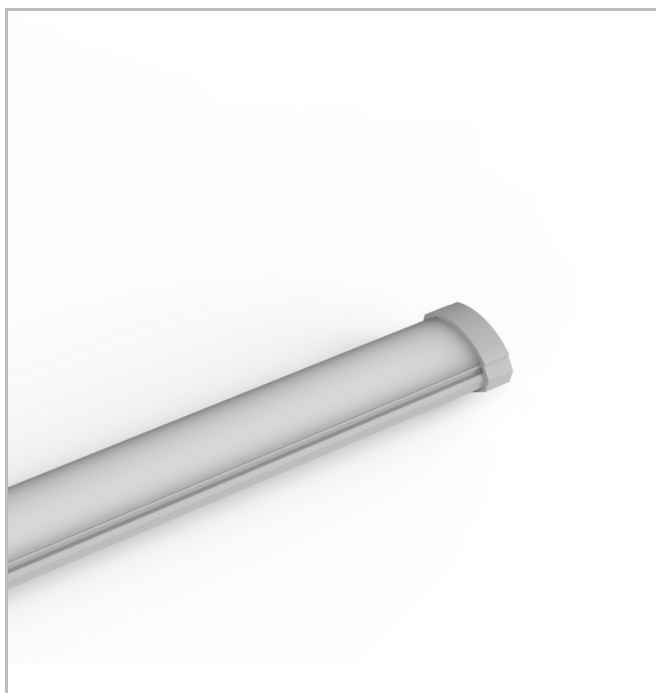


# Hidline Corner

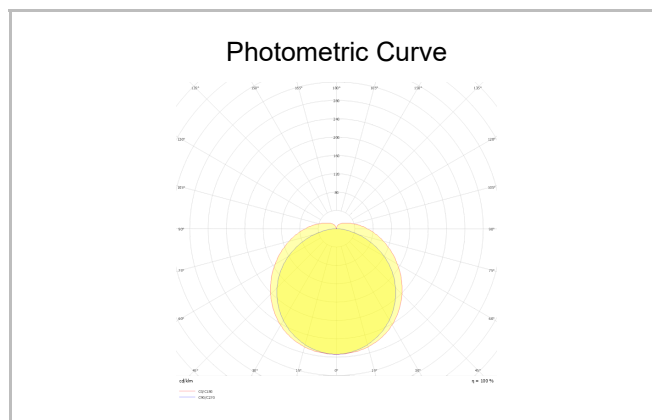
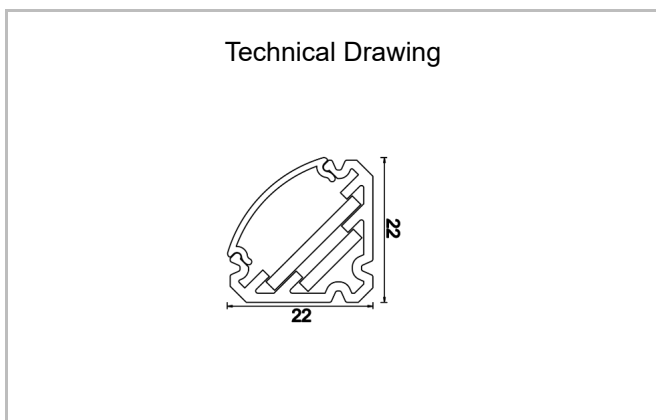
HID 022 100 010S 8030 10 99 OP 44 00



Surface Mounted Cove Lighting Luminaire



|                                      |                       |
|--------------------------------------|-----------------------|
| <b>Luminaire Group</b>               | Cove Lighting         |
| <b>Mounting Type</b>                 | Surface Mounted       |
| <b>Housing</b>                       | Aluminum Profile      |
| <b>Optics</b>                        | Opal Diffuser         |
| <b>Light Source</b>                  | LED                   |
| <b>Electrical Protection Class</b>   | CLASS II              |
| <b>IP</b>                            | 20                    |
| <b>IK</b>                            | 03                    |
| <b>Operating Temperature</b>         | -20°C / +40°C         |
| <b>Luminous Flux</b>                 | 960                   |
| <b>Consumption Power</b>             | 12                    |
| <b>Luminaire Efficiency</b>          | 80 lm/W               |
| <b>Color Rendering (CRI)</b>         | >80                   |
| <b>Light Color Temperature (CCT)</b> | 3500K                 |
| <b>Color Tolerance</b>               | < 3 SDCM              |
| <b>Driver Type</b>                   | On/Off                |
| <b>Driver Brand</b>                  | Tridonic              |
| <b>LED Brand</b>                     | Samsung               |
| <b>Input Voltage / Frequency</b>     | 220-240 V AC 50/60 Hz |
| <b>Power Factor</b>                  | >0.9                  |
| <b>Surge</b>                         | 1kV                   |
| <b>THD (AKIM)</b>                    | >%20                  |
| <b>LED life</b>                      | >70.000 hours         |
| <b>Option</b>                        | On-Off / Dali / 1-10V |



| SKU | Product Code                         | Power (W) | Luminous Flux (LM) | CRI | CCT (K) | Optics                            | Dimensions (mm) |
|-----|--------------------------------------|-----------|--------------------|-----|---------|-----------------------------------|-----------------|
|     | HID 022 100 010S 8030 10 99 OP 44 00 | 12        | 960                | >80 | 4000    | 130°<br>Polycarbonat<br>e Acrylic | 1000x22x22      |

[www.atellighting.com](http://www.atellighting.com)